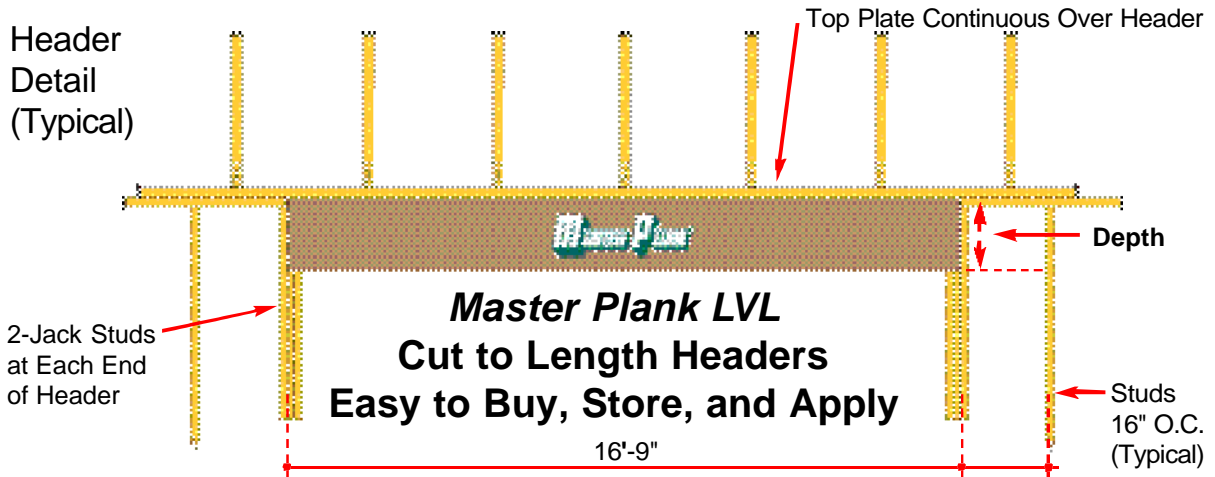


Distributed by:

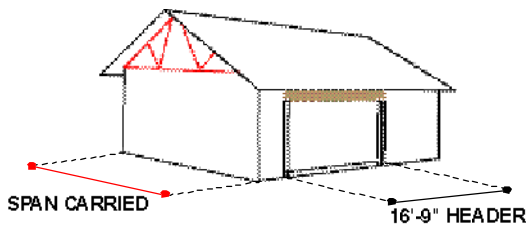


LVL HEADER 16'-9" 3-1/2" Thickness 16'-3" Clear Opening



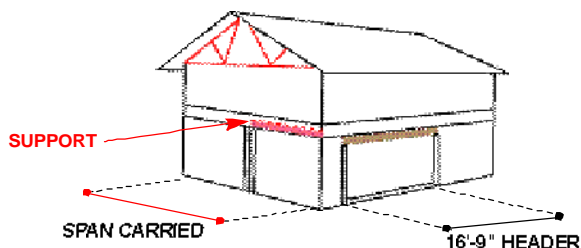
Maximum Span Carried Tables

ROOF LOAD ONLY



Depth D	Non-Snow Load (125%)		Snow Load Areas (115%)		
	20LL+15DL	20LL+20DL	25LL+15DL	30LL+15DL	40LL+15DL
11-7/8"	32'-7"	28'-0"	32'-7"	30'-11"	25'-10"
14"	53'-3"	46'-1"	48'-8"	47'-2"	38'-11"
16"	60'-2"	52'-3"	60'-2"	58'-5"	48'-3"

ROOF AND HALF FLOOR LOAD



Depth D	Non-Snow Load (125%)		Snow Load Areas (115%)		
	20LL+15DL	20LL+20DL	25LL+15DL	30LL+15DL	40LL+15DL
14"	20'-7"	18'-7"	20'-7"	20'-1"	17'-7"
16"	31'-10"	29'-2"	31'-10"	31'-7"	27'-7"
18"	32'-0"	29'-4"	32'-0"	31'-9"	27'-9"

- For simple span headers only (headers with a support at each end)
- Roof loads include a 2'-0" overhang.
- Loads include 100 PLF wall load. (Roof and Half Floor load only). Floor Load is 40 psf LL and 12psf DL.
- Interior support at midspan of floor joists is required (Roof and Half Floor load only).
- Minimum bearing length is 3".

finnforest

Finnforest USA, Engineered Wood Division

32205 Little Mack Avenue
Roseville, Michigan 48066

Phone: 800/622-5850 • Fax: 586/296-8773

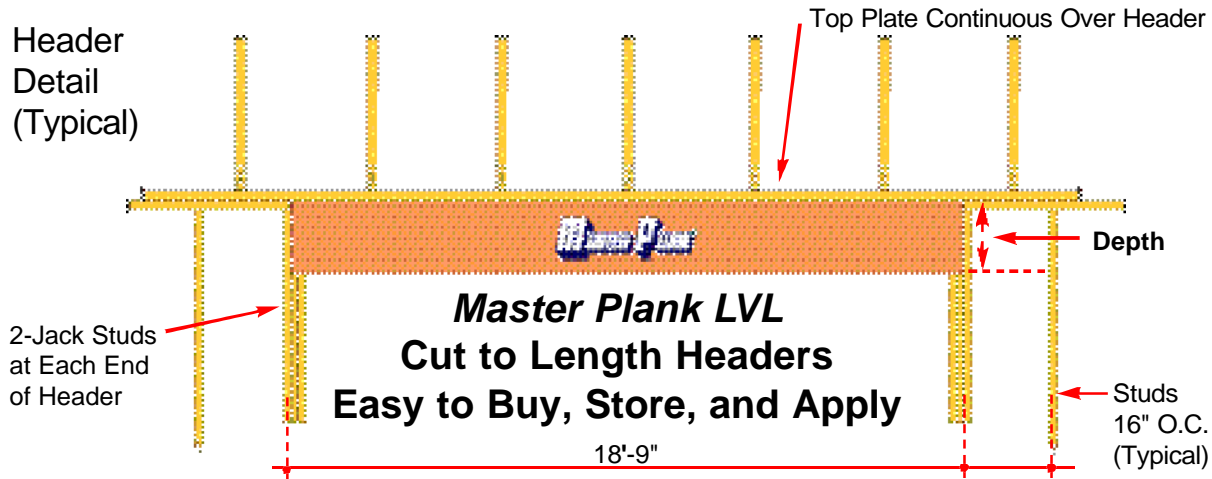
www.finnforestus.com

For "span carried" greater than shown in the table, or special loading conditions contact our Technical Department.



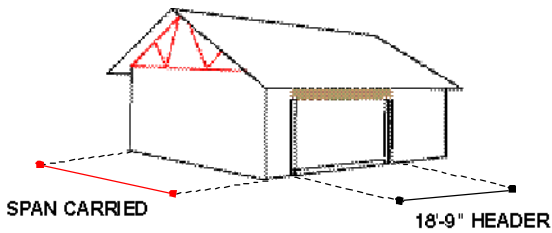
LVL HEADER 18'-9" 3-1/2" Thickness 18'-3" Clear Opening

Header Detail (Typical)



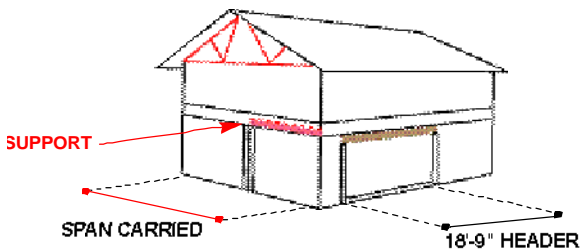
Maximum Span Carried Tables

ROOF LOAD ONLY



Depth D	Non-Snow Load (125%)		Snow Load Areas (115%)		
	20LL+15DL	20LL+20DL	25LL+15DL	30LL+15DL	40LL+15DL
14"	38'-4"	33'-0"	37'-8"	36'-7"	30'-0"
16"	53'-2"	46'-0"	48'-8"	47'-4"	38'-0"
18"	53'-4"	46'-2"	53'-2"	51'-7"	42'-6"

ROOF AND HALF FLOOR LOAD



Depth D	Non-Snow Load (125%)		Snow Load Areas (115%)		
	20LL+15DL	20LL+20DL	25LL+15DL	30LL+15DL	40LL+15DL
14"	13'-0"	11'-8"	12'-10"	12'-6"	10'-10"
16"	21'-11"	20'-0"	21'-9"	21'-6"	18'-11"
18"	27'-10"	25'-2"	27'-10"	27'-2"	23'-11"

- For simple span headers only (headers with a support at each end)
- Roof loads include a 2'-0" overhang.
- Loads include 100 PLF wall load. (Roof and Half Floor load only). Floor Load is 40 psf LL and 12psf DL.
- Interior support at midspan of floor joists is required (Roof and Half Floor load only).
- Minimum bearing length is 3".

For "span carried" greater than shown in the table, or special loading conditions contact our Technical Department.

finnforest

Finnforest USA, Engineered Wood Division

32205 Little Mack Avenue
Roseville, Michigan 48066

Phone: 800/622-5850 • Fax: 586/296-8773

www.finnforestus.com